



JAPAN CARPET CO., LTD.

8-12 Chikko-Hamadera-Nishimachi, Nishi-ku,
Sakai-shi Osaka 592-8352 JAPAN





EXPERIENCE INSPIRES PERFORMANCE, WHERE TRADITION MEETS QUALITY

CARPET MANUFACTURE SINCE 1874 IN JAPAN

WE SPECIALIZE IN MANUFACTURING PREMIUM CARPET TILES.
GUIDED BY THE JAPANESE BUSINESS PHILOSOPHY OF "KAIZEN," WHICH EMPHASIZES CONTINUOUS IMPROVEMENT.
OUR COMMITMENT IS TO DELIVER FLOORING SOLUTIONS THAT ARE NOT ONLY DURABLE AND FUNCTIONAL
BUT ALSO STYLISH AND INNOVATIVE.





TC5201/TC5203



PTC4051/PTC4052/PTC4053

CONTENTS

Nylon Carpet Tiles	4 - 23
Polypropylene Carpet Tiles	24 - 25
Super Soil & Stain Guard	26
Online Product Visualizer	27
Quick Lay	28 - 29
Home Tile	30 - 33
Certification	34
About us	35



ECONYL® is made from 100% recycled PA6 (Nylon Yarn).
Manufactured by Aquafil.



Super Soil Guard is a surface treatment that utilizes a non-fluorine resin and nano-emulsion agent, offering resistance against soiling and stains.



Quick Lay carpet tiles can be easily installed without additional adhesive. Available to install on floors with various finishes including highly polished surfaces.

[*Optional Feature](#)

TC4300 SERIES



TC4301/TC4302



TC4301



TC4302



TC4303



TC4304



TC4305



Optional Feature

QUICK LAY
MADE IN JAPAN



MONOLITHIC



QUARTER TURN

Installation Methods

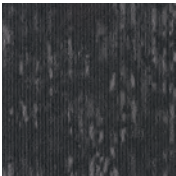
SPECIFICATIONS

Yarn	Solution Dyed Nylon (Recycled PA6)
Machine Gauge	1/10 Gauge
Base Fabric	Nonwoven Polyester
Backing	PVC + Glass Fiber
Size	500mm×500mm
Overall Thickness	7mm
Pile Height	H 4.0mm/L 2.0mm (high and low loop)
Packing	20pcs/box = 5m ² /box
Smoke Density	(ASTM E662) Less than 450
Antistatic	Less than 1.0kv (JIS-L4406 STROLL 23°C degree 25% R.H.)
Electrostatic Propensity	Maximum Average 0.5kv (AATCC 134)
Colorfastness to Light	Rating 5.0 = No Change (AATCC 16)
Critical Radiant Flux	(ASTM E648) Class 1 Average CRF 0.48/cm ² or higher

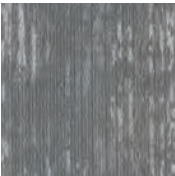


TC4350 SERIES

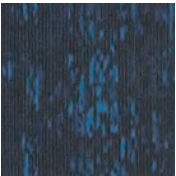
TC4351/TC4352



TC4351



TC4352



TC4353



TC4354



Optional Feature

QUICK LAY
MADE IN JAPAN



MONOLITHIC



QUARTER TURN

Installation Methods

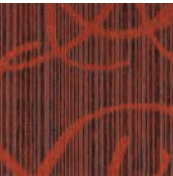
SPECIFICATIONS

Yarn	Solution Dyed Nylon (Recycled PA6)
Machine Gauge	1/10 Guage
Base Fabric	Nonwoven Polyester
Backing	PVC + Glass Fiber
Size	500mm×500mm
Overall Thickness	7mm
Pile Height	H 4.0mm/L 2.0mm (high and low loop)
Packing	20pcs/box = 5m ² /box
Smoke Density	(ASTM E662) Less than 450
Antistatic	Less than 1.0kv (JIS-L4406 STROLL 23°C degree 25% R.H.)
Electrostatic Propensity	Maximum Average 0.5kv (AATCC 134)
Colorfastness to Light	Rating 5.0 = No Change (AATCC 16)
Critical Radiant Flux	(ASTM E648) Class 1 Average CRF 0.48/cm ² or higher



TC4650 SERIES

TC4651/TC4654



TC4651



TC4652



TC4653



TC4654



Optional Feature

QUICK LAY
MADE IN JAPAN



MONOLITHIC



QUARTER TURN

Installation Methods

SPECIFICATIONS

Yarn	Solution Dyed Nylon (Recycled PA6)
Machine Gauge	1/10 Guage
Base Fabric	Nonwoven Polyester
Backing	PVC + Glass Fiber
Size	500mm×500mm
Overall Thickness	7mm
Pile Height	H 4.0mm/L 2.0mm (high and low loop)
Packing	20pcs/box = 5m ² /box
Smoke Density	(ASTM E662) Less than 450
Antistatic	Less than 1.0kv (JIS-L4406 STROLL 23°C degree 25% R.H.)
Electrostatic Propensity	Maximum Average 0.5kv (AATCC 134)
Colorfastness to Light	Rating 5.0 = No Change (AATCC 16)
Critical Radiant Flux	(ASTM E648) Class 1 Average CRF 0.48/cm ² or higher

TC4700 SERIES



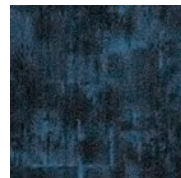
TC4701/TC4703



TC4701



TC4702



TC4703



Optional Feature

QUICK LAY
MADE IN JAPAN

Installation Methods



MONOLITHIC



QUARTER TURN

SPECIFICATIONS

Yarn	Solution Dyed Nylon (Recycled PA6)
Machine Gauge	1/10 Guage
Base Fabric	Nonwoven Polyester
Backing	PVC + Glass Fiber
Size	500mm×500mm
Overall Thickness	7mm
Pile Height	H 5.0mm/L 2.5mm (high and low loop)
Packing	20pcs/box = 5m ² /box
Smoke Density	(ASTM E662) Less than 450
Antistatic	Less than 1.0kv (JIS-L4406 STROLL 23°C degree 25% R.H.)
Electrostatic Propensity	Maximum Average 0.5kv (AATCC 134)
Colorfastness to Light	Rating 5.0 = No Change (AATCC 16)
Critical Radiant Flux	(ASTM E648) Class 1 Average CRF 0.48/cm ² or higher

TC4750 SERIES



TC4752/TC4753



TC4751



TC4752



TC4753



Optional Feature

QUICK LAY
MADE IN JAPAN

Installation Methods



MONOLITHIC



QUARTER TURN

SPECIFICATIONS

Yarn	Solution Dyed Nylon (Recycled PA6)
Machine Gauge	1/10 Gauge
Base Fabric	Nonwoven Polyester
Backing	PVC + Glass Fiber
Size	500mm×500mm
Overall Thickness	7mm
Pile Height	H 5.0mm/L 2.0mm (high and low loop)
Packing	20pcs/box = 5m ² /box
Smoke Density	(ASTM E662) Less than 450
Antistatic	Less than 1.0kv (JIS-L4406 STROLL 23°C degree 25% R.H.)
Electrostatic Propensity	Maximum Average 0.5kv (AATCC 134)
Colorfastness to Light	Rating 5.0 = No Change (AATCC 16)
Critical Radiant Flux	(ASTM E648) Class 1 Average CRF 0.48/cm ² or higher

TC4450 SERIES



TC4451/TC4452/TC4453/TC4457/TC4455



TC4451



TC4452



TC4453



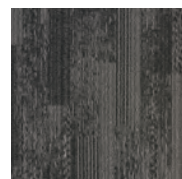
TC4454



TC4455



TC4457



TC4459



TC4456



TC4458



Optional Feature

QUICK LAY
MADE IN JAPAN

Installation Methods



MONOLITHIC



QUARTER TURN



BRICK



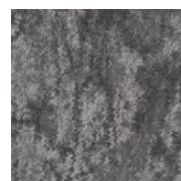
ASHLAR

SPECIFICATIONS

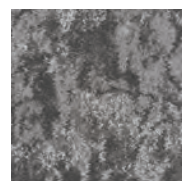
Yarn	Solution Dyed Nylon (Recycled PA6)
Machine Gauge	1/10 Gauge
Base Fabric	Nonwoven Polyester
Backing	PVC + Glass Fiber
Size	500mm×500mm
Overall Thickness	7mm
Pile Height	H 4.0mm/L 2.0mm (high and low loop)
Packing	20pcs/box = 5m ² /box
Smoke Density	(ASTM E662) Less than 450
Antistatic	Less than 1.0kv (JIS-L4406 STROLL 23°C degree 25% R.H.)
Electrostatic Propensity	Maximum Average 0.5kv (AATCC 134)
Colorfastness to Light	Rating 5.0 = No Change (AATCC 16)
Critical Radiant Flux	(ASTM E648) Class 1 Average CRF 0.48/cm ² or higher



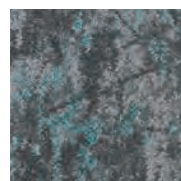
TC5201/TC5210



TC5201



TC5202



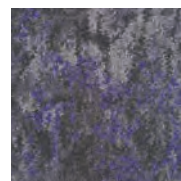
TC5203



TC5204



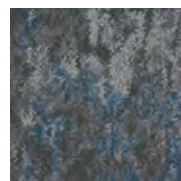
TC5205



TC5206



TC5207



TC5208



TC5209



TC5210



Optional Feature

QUICK LAY
MADE IN JAPAN

Installation Methods



MONOLITHIC



QUARTER TURN

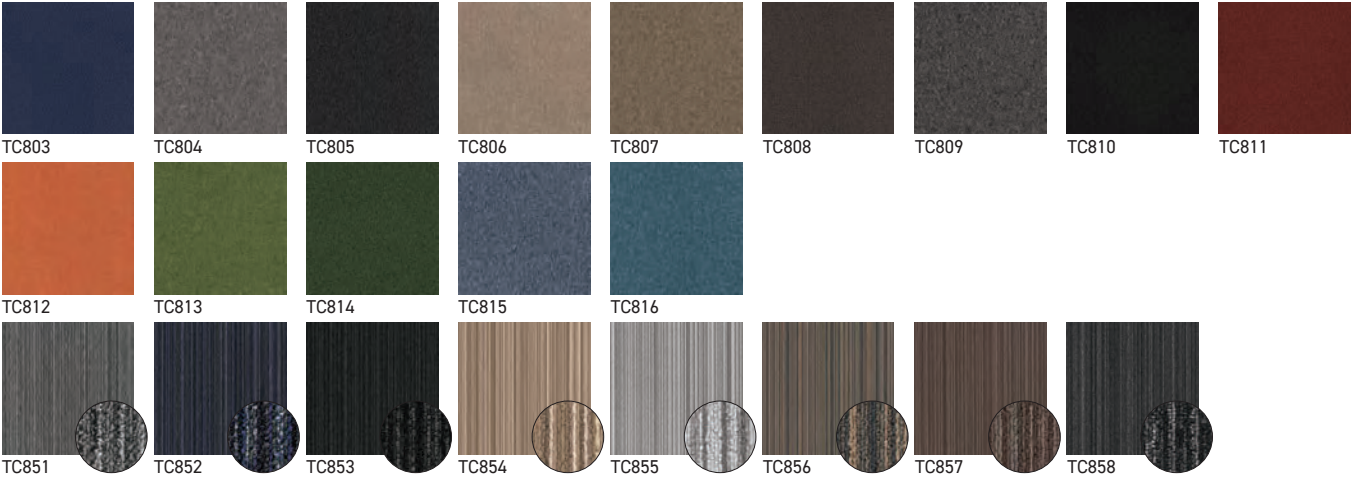
SPECIFICATIONS

Yarn	Solution Dyed Nylon (Recycled PA6)
Machine Gauge	1/10 Gauge
Base Fabric	Nonwoven Polyester
Backing	PVC + Glass Fiber
Size	500mm×500mm
Overall Thickness	7.5mm
Pile Height	H 5.5mm/L 2.5mm (high and low loop)
Packing	20pcs/box = 5m ² /box
Smoke Density	(ASTM E662) Less than 450
Antistatic	Less than 1.0kv (JIS-L4406 STROLL 23°C degree 25% R.H.)
Electrostatic Propensity	Maximum Average 0.5kv (AATCC 134)
Colorfastness to Light	Rating 5.0 = No Change (AATCC 16)
Critical Radiant Flux	(ASTM E648) Class 1 Average CRF 0.48/cm ² or higher

TC800 SERIES



TC852/TC803



Optional Feature
QUICK LAY
MADE IN JAPAN



SPECIFICATIONS

Yarn	Solution Dyed Nylon (Recycled PA6)
Machine Gauge	1/10 Guage
Base Fabric	Nonwoven Polyester
Backing	PVC + Glass Fiber
Size	500mm×500mm
Overall Thickness	6mm
Pile Height	3.0mm (loop)
Packing	20pcs/box = 5m ² /box
Smoke Density	(ASTM E662) Less than 450
Antistatic	Less than 1.0kv (JIS-L4406 STROLL 23°C 25% R.H.)
Electrostatic Propensity	Maximum Average 0.5kv (AATCC 134)
Colorfastness to Light	Rating 5.0 = No Change (AATCC 16)
Critical Radiant Flux	(ASTM E648) Class 1 Average CRF 0.48/cm ² or higher

PTC4000 SERIES



PTC4001/PTC4002/PTC4005/PTC4006



PTC4001



PTC4002



PTC4003



PTC4004



PTC4005



PTC4006

ECONYL®



Installation Methods



HERRINGBONE



MONOLITHIC



ASHLAR



END BLOCK



BASKETWEAVE

SPECIFICATIONS

Yarn	Solution Dyed Nylon (Recycled PA6)
Machine Gauge	1/10 Gauge
Base Fabric	Nonwoven Polyester
Backing	PVC + Glass Fiber
Size	250mm×1000mm
Overall Thickness	7mm
Pile Height	H 4.0mm/L 2.0mm (high and low loop)
Packing	12pcs/box = 3m ² /box
Smoke Density	(ASTM E662) Less than 450
Antistatic	Less than 1.0kv (JIS-L4406 STROLL 23°C 25% R.H.)
Electrostatic Propensity	Maximum Average 0.5kv (AATCC 134)
Colorfastness to Light	Rating 5.0 = No Change (AATCC 16)
Critical Radiant Flux	(ASTM E648) Class 1 Average CRF 0.48/cm ² or higher

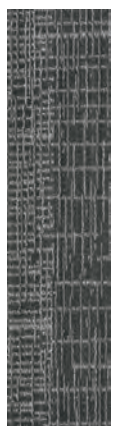
PTC4050 SERIES



PTC4051/PTC4052/PTC4053



PTC4051



PTC4052



PTC4053



Installation Methods



HERRINGBONE



MONOLITHIC



ASHLAR



END BLOCK



BASKETWEAVE

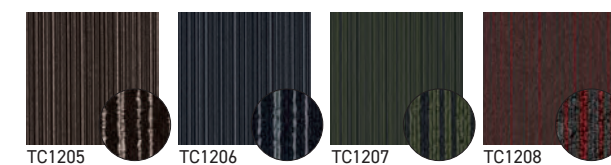
SPECIFICATIONS

Yarn	Solution Dyed Nylon 6 (Aquafil Econyl)
Machine Gauge	1/10 Gauge
Base Fabric	Nonwoven Polyester
Backing	PVC + Glass Fiber
Size	250mm×1000mm
Overall Thickness	7mm
Pile Height	H 4.0mm/L 2.0mm (high and low loop)
Packing	16pcs/box = 4m ² /box
Smoke Density	(ASTM E662) Less than 450
Antistatic	Less than 1.0kv (JIS-L4406 STROLL 23°C 25% R.H.)
Electrostatic Propensity	Maximum Average 0.5kv (AATCC 134)
Colorfastness to Light	Rating 5.0 = No Change (AATCC 16)
Critical Radiant Flux	(ASTM E648) Class 1 Average CRF 0.48/cm ² or higher

TC1000 SERIES



TC1052/TC1202



Optional Feature

QUICK LAY
MADE IN JAPAN

Installation Methods



MONOLITHIC



QUARTER TURN

SPECIFICATIONS

Yarn	Polypropylene
Machine Gauge	1/10 Gauge
Base Fabric	Nonwoven Polyester
Backing	PVC + Glass Fiber
Size	500mm×500mm
Overall Thickness	6.5mm
Pile Height	3.5mm
Packing	16pcs/box = 4m ² /box
Antistatic	2.0kv (JIS-L4406 STROLL 23°C 25% R.H.)
Flammability Official Test Number	EO 910056



SUPER SOIL & STAIN GUARD

The carpet tiles are coated with SSG, a combination of non-fluorine resin and nano emulsion agents, providing outstanding soil and stain resistance.

SSG is available for the following items.

TC4300, TC4350, TC4650, TC4700, TC4750, TC4450, TC5200,
PTC4000, PTC4050

INTERNAL TESTS



Carpet tile without SSG



Carpet tile with SSG

SCAN TO
DISCOVER

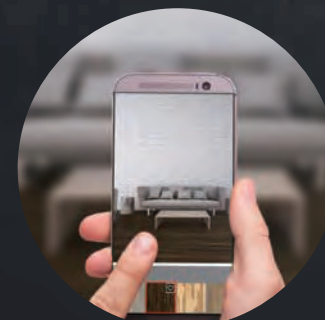


ONLINE PRODUCT VISUALIZER



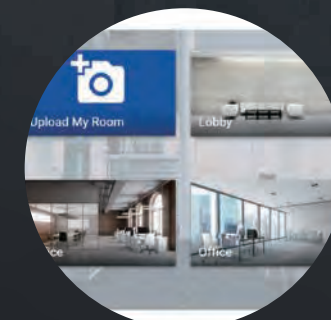
The most advanced visualizer on the Planet

Online product visualizer uses virtual reality to allow users to get a clear idea as to how different designs would look in a particular location. Such innovations make life easier for the customer and enhances the buying experience.



1. Find a Floor

Find a floor that is enable for the Room Visualiser Tool and click the "View In Your Room" button.



2. Photograph your Room

Upload a photo of your room (Try to include a decent area of floor) or use one of our preset room scenes instead.



3. Save or Share

View the floor in your room, swap to see other floors, share or save your image and easily order a sample.

SPECIAL FEATURE

Save Time and Save Cost

"Quick Lay" carpet tiles offer a hassle-free installation process, requiring no additional adhesives. These tiles are designed for quick and easy setup, saving you both time and cost.

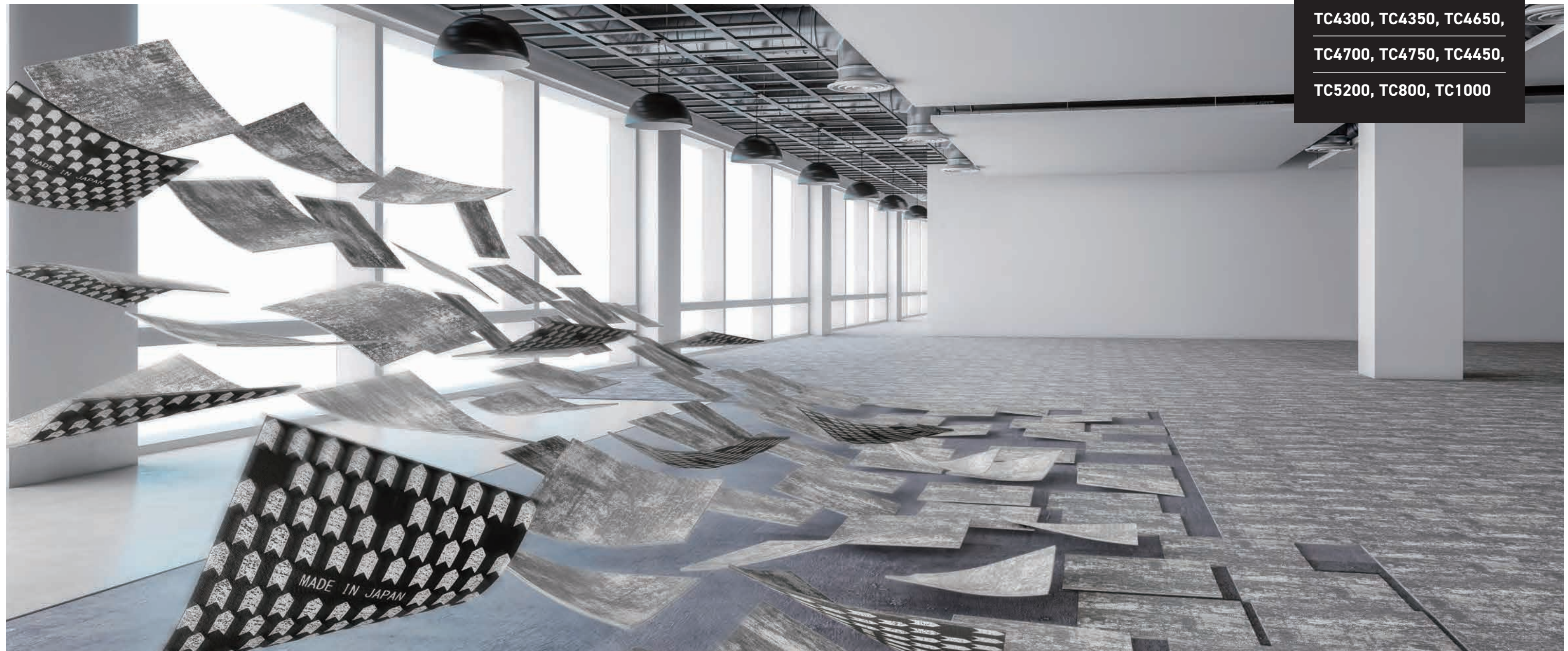
Key benefits include:

- Out-of-the-box installation – no additional tools or materials needed.
- No adhesives, peeling, or taping required – simple, straightforward installation.
- Cost-effective – saves on installation costs.

Quick Lay consists of acrylic resin foam and urethane resin. This combination makes the adhesion very strong, especially in the lateral direction. This makes the tiles an excellent option for installing on floors with various finishes, including highly polished surfaces.

Optionally,
Quick Lay is available
for the following items.

**TC4300, TC4350, TC4650,
TC4700, TC4750, TC4450,
TC5200, TC800, TC1000**





HOME TILE SERIES

Enhance your home with our Home Tile Series
Designed for easy installation

Their substantial thickness
offers excellent shock absorption,
ensuring a safer environment
for both children and pets.

HT311/HT319

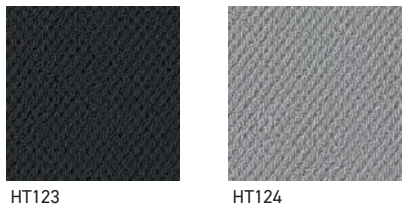


HOME TILE 100

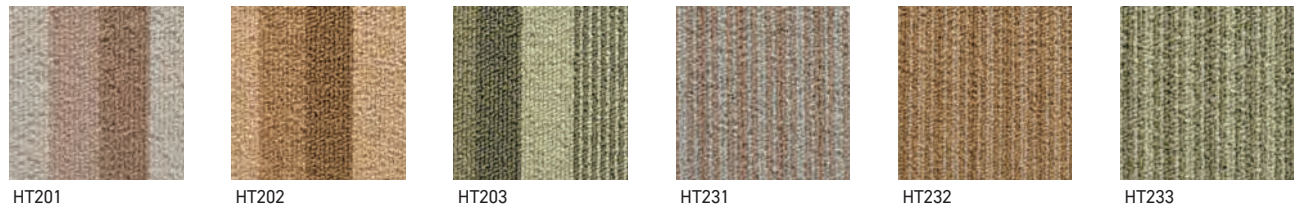


SPECIFICATIONS

Pile material ————— Polypropylene 100%
Pile weigh ————— 600g/m²
Pile length ————— 5.0/2.8mm
Overall thickness ————— 8.5mm



HOME TILE 200



SPECIFICATIONS

Pile material — Solution Dyed Nylon (Recycled PA6)
Pile weigh ————— 600g/m²
Pile length ————— 3.5mm
Overall thickness ————— 7.0mm



HOME TILE 300



SPECIFICATIONS

Pile material — Solution Dyed Nylon (Recycled PA6)
Pile weigh ————— 770g/m²
Pile length ————— 5.5mm
Overall thickness ————— 9.0mm



CERTIFICATION



GREEN LABEL PLUS

As a Green Label Plus certified company, we meet the stringent criteria of the CRI by removing over 13 toxins from our manufacturing process. Additionally, it contributes towards points for earning credit under LEED.

ABOUT JAPAN CARPET CO., LTD.

Since our founding in 1874, we have remained committed to delivering carpet products that blend durability, style, and functionality.

Drawing from our rich history, we are driven by a passion for innovation, while consistently prioritizing wellbeing. We take pride in our "Made in Japan" craftsmanship, offering massproduction capabilities with highspeed precision, all while ensuring premium quality and exceptional service for our valued customers.

With an annual production capacity of 17 million square meters of carpet tiles, we are equipped to meet the demands of the global market, creating spaces that are both beautiful and designed to exceed expectations.



THE SINGAPORE GREEN BUILDING PRODUCT (SGBP)

The Singapore Green Building Product (SGBP) certification scheme is the only industry-centric scheme for green building products. It is well recognized under the Building and Construction Authority's (BCA) Green Mark Scheme, allowing certified products to accrue points towards a building project's eventual sustainability rating.



JAPANESE INDUSTRIAL STANDARDS

We hold JIS Mark Certification from an ISO/IEC 17065 accredited organization, confirming our quality control system meets JIS L 4406 for consistent carpet tile production. Our factory has been rigorously evaluated and certified for its quality management system, ensuring compliance with JIS standards in the production of our products.



Head office plant (in Osaka prefecture)



Shiga factory (in Shiga prefecture)



PTC4051/PTC4052/PTC4053